

Stainless steel cylinders Series 92

Single and double-acting (magnetic)
 ø32 - 40 - 50 - 63 cushioned

- » Clean design
- » Stainless steel AISI 316
- » Adjustable end-stroke cushioning



Stainless steel cylinders Series 92 are suitable for use in the off-shore, naval, pharmaceutical, nuclear and food industries.

This series of cylinders is normally equipped with adjustable end-stroke cushioning. In addition, these cylinders are equipped with a mechanical cushioning in order to make the impact of the piston less noisy as it reaches the end of the stroke. Their construction enables the replacement of all seals.

GENERAL DATA

Type of construction	end blocks secured to the tube
Operation	single-acting and double-acting
Materials	Stainless steel AISI 316, end blocks, tube, rod NBR seals
Type of mounting	feet - front and rear bracket threaded pin - locking ring for end cap
Stroke	standard (see table)/min.-max. all bores 25-800 mm
Operating temperature	0°C + 80°C (with dry air - 20°C)
Operating pressure	1 ÷ 10 bar
Speed	10 ÷ 1000 mm/sec (no load)
Fluid	clean air, without lubrication If lubricated air is used, it is recommended to use oil ISOVG32. Once applied the lubrication should never be interrupted.

STANDARD STROKES FOR DOUBLE-ACTING CYLINDERS SERIES 92

∅	25	50	75	80	100	125	150	160	200	250	300	320	400	500
32	*	*	*	*	*	*	*	*	*	*	*	*	*	*
40	*	*	*	*	*	*	*	*	*	*	*	*	*	*
50	*	*	*	*	*	*	*	*	*	*	*	*	*	*
63	*	*	*	*	*	*	*	*	*	*	*	*	*	*

CODING EXAMPLE

92	M	2	A	050	A	0200	
-----------	----------	----------	----------	------------	----------	-------------	--

92	SERIES
M	VERSION M = standard magnetic
2	OPERATION 1 = single-acting (front spring) 2 = double-acting (front and rear cush.) 6 = double-acting (through-rod front and rear cushions)
A	MATERIALS A = stainless steel AISI 316, seals in NBR V = stainless steel AISI 316, all FKM seals
050	BORE (∅): 032 = 32 mm 040 = 40 mm 050 = 50 mm 063 = 63 mm
A	TYPE OF DESIGN A = standard (locking ring for end cap V + lock nut for rod U)
0200	STROKE (see table)
	= standard V = rod seals in FKM

STAINLESS STEEL CYLINDERS SERIES 92

MOVEMENT



Swivel ball joint Mod. GA-90



Piston rod lock nut Mod. U-90



Nose nut V-92



Bracket with threaded pins Mod. T



Foot mount Mod. P



Rod fork end Mod. G-90

All accessories are supplied separately, except for piston rod lock nut Mod. U.



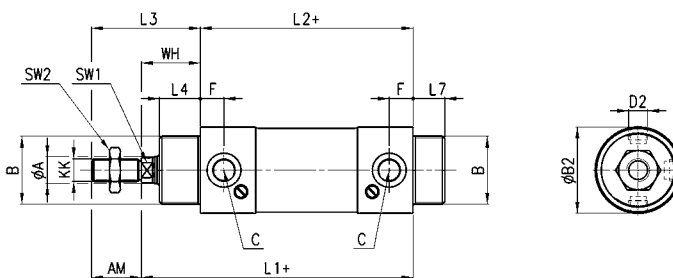
Trunnion bracket Mod. I



Cylinders Series 92



+ = add the stroke



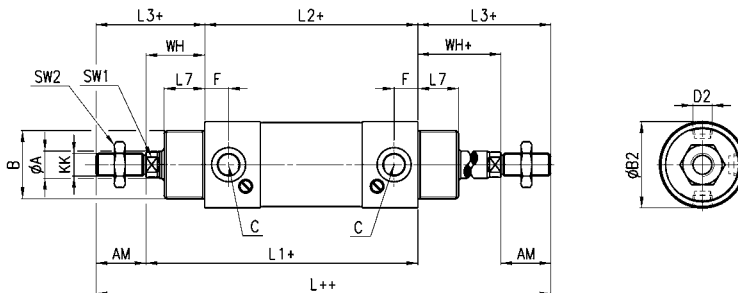
DIMENSIONS																
Ø	A	KK	B	B2	C	D2	F	SW1	SW2	AM	WH	L1+	L2+	L3	L4	L7
32	12	M10x1,25	M30x1,5	35	G1/8	M8x1	10.5	10	17	22	26	120	94	48	18	14
40	16	M12x1,25	M38x1,5	44	G1/4	M10x1	15	13	19	24	30	135	105	54	22	16
50	20	M16x1,5	M45x1,5	54	G1/4	M12x1,5	14.5	17	24	32	37	145	106	69	25	18
63	20	M16x1,5	M45x1,5	67	G3/8	M14x1,5	15	17	24	32	37	158	121	69	25	18

Cylinders Series 92

Through-rod.



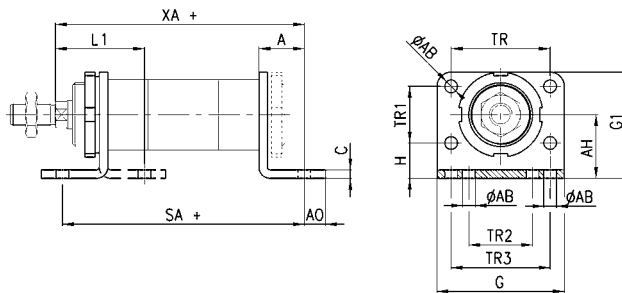
+ = add the stroke
++ = add the stroke 2 times



DIMENSIONS																
Ø	A	AM	B	F	C	KK	SW1	SW2	WH	L++	L1+	L2+	L3	L4	B2	D2
32	12	22	M30x1,5	10,5	G1/8	M10x1,25	10	17	26	190	120	94	48	18	35	M8x1
40	16	24	M38x1,5	15	G1/4	M12x1,25	13	19	30	213	135	105	54	22	44	M10x1
50	20	32	M45x1,5	14,5	G1/4	M16x1,5	17	24	37	244	143	106	69	25	54	M12x1,5
63	20	32	M45x1,5	15	G3/8	M16x1,5	17	24	37	259	158	121	69	25	67	M14x1,5

Foot mount Mod. P

Material: stainless steel 304.
 Supplied with:
 1x nut
 2x single feet



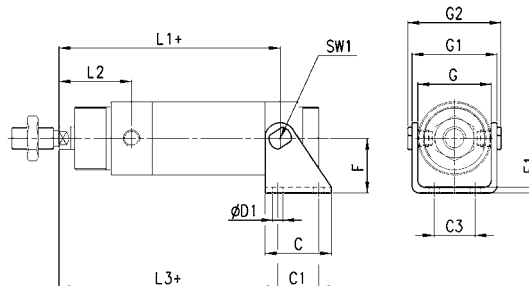
+ = add the stroke

DIMENSIONS

Mod.	∅	A	AB	AO	AH	C	G	G1	TR	TR1	TR2	TR3	H	L1	SA +	XA +
P-92-32	32	24	7	11	32	4	66	53	52	28	32	52	18	46	142	144
P-92-40	40	28	9	15	36	5	80	61	60	30	36	60	21	53	161	163
P-92-50	50	32	9	15	45	6	90	75	70	40	45	70	25	63	170	175
P-92-63	63	32	9	10	50	6	96	85	76	50	50	76	25	63	185	190

Trunnion bracket Mod. I

Material: stainless steel 304.
 Supplied with:
 1x female trunnion
 2x pins
 2x cartridges



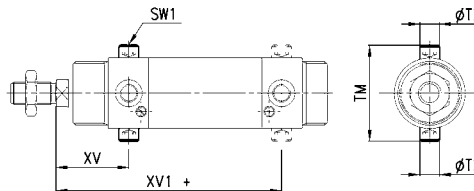
+ = add the stroke

DIMENSIONS

Mod.	∅	C	C1	C2	C3	D1	D2	E1	F	G	G1	G2	L1+	L2	L3+	SW1
I-92-32	32	40	24	46,1	20	7	10	4	35	38,1	50,1	58,1	109,5	36,5	105,5	13
I-92-40	40	50	30	56,1	28	9	12	5	40	46,1	60,1	70,1	120	45	117	17
I-92-50	50	54	34	69,1	36	9	14	6	45	57,1	74,1	86,1	128,5	51,5	124,5	19
I-92-63	63	65	35	82,1	42	9	16	6	50	70,1	88,1	100,1	143	52	142	19

Bracket with threaded pins Mod. T

Material: stainless steel 303.
 Supplied with:
 2x pins



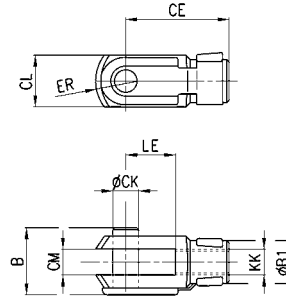
+ = add the stroke

DIMENSIONS

Mod.	∅	XV	XV1 +	TD	TM	SW1
T-42-32	32	36,5	109,5	10	51	5
T-42-40	40	45	120	12	62	6
T-42-50	50	51,5	128,5	14	75	6
T-42-63	63	52	143	16	91	8

Rod fork end Mod. G-90

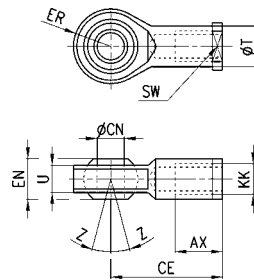
ISO 8140.
Material: stainless steel 303.



DIMENSIONS										
Mod.	ϕ	CK	LE	CM	CL	ER	CE	KK	B	$\phi B1$
G-90-25-32	32	10	20	10	20	12	40	M10x1,25	26	18
G-90-40	40	12	24	12	24	14	48	M12x1,25	32	20
G-90-50-63	50-63	16	32	16	32	19	64	M16x1,5	40	26

Swivel ball joint Mod.GA-90

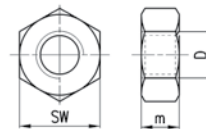
ISO 8139.
Material: stainless steel 304.



DIMENSIONS											
Mod.	ϕ	CN	U	EN	ER	AX	CE	KK	ϕT	Z	SW
GA-90-32	32	10	10,5	14	14	20	43	M10x1,25	15	6,5	17
GA-90-40	40	12	12	16	16	22	50	M12x1,25	17,5	6,5	19
GA-90-50-63	50-63	16	15	21	21	28	64	M16x1,5	22	7,5	22

Piston rod lock nut Mod. U-90

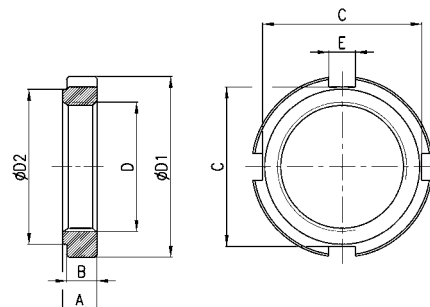
UNI 5589.
Material: stainless steel 304.



DIMENSIONS				
Mod.	ϕ	d	m	SW
U-90-25-32	32	M10x1,25	6	17
U-90-40	40	M12x1,25	7	19
U-90-50-63	50-63	M16x1,5	8	24

Nose nut Mod.V-92

Material: stainless steel 304



DIMENSIONS								
Mod.	ϕ	D	D1	D2	A	B	C	E
V-92-32	32	M30x1,5	42	36	8	7	37	6,2
V-92-40	40	M38x1,5	50	48	10	9	44	7,2
V-92-50-63	50-63	M45x1,5	60	56	10	9	53	7,2