

Take-off blocks Series MC

Ports G1/4 and G1/2
Modular



The take-off blocks, when equipped with a no return valve, allow the use of non lubricated air and should be inserted between the regulator and the lubricator.
If mounted as last element, they should be assembled with terminal flanges.

GENERAL DATA

Construction	modular, compact, diaphragm type
Materials	zama, NBR, technopolymer
Ports	G1/4 G1/2
Weight	kg 0,232 kg 0,379
Take off ports	G1/4 G1/2
Mounting	in- line or wall mounting (in any position)
Operating temperature	-5°C + 50°C (with the dew point of the fluid lower than 2°C at the min. working temperature)
Finishing	enamelled
Operating pressure	0 + 16 bar
Nominal flow (6 bar ΔP 1bar)	MC1-B = 4080 NI/min MC1-B-VNR = 2350 NI/min MC2-B = 8400 NI/min MC2-B-VNR = 5600 NI/min

CODING EXAMPLE

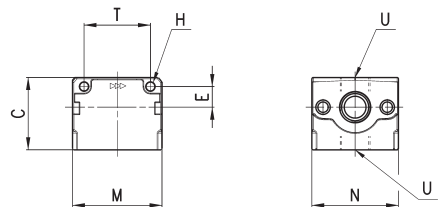
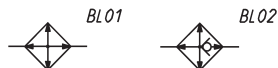
MC	2	-	B	-	VNR
-----------	----------	----------	----------	----------	------------

MC	SERIES
2	SIZE: 1 = G1/4 2 = G1/2
B	B = TAKE OFF BLOCK
VNR	VERSION: VNR = with no return valve

Take off blocks Series MC



BL01 = take-off block
BL02 = take-off block with VNR



DIMENSIONS									
Mod.	C	H	E	M	N	T	U		Symbol
MC1-B	43	4,5	11	45	45	35	G1/4	1	BL01
MC1-B-VNR	43	4,5	11	45	45	35	G1/4	1	BL02
MC2-B	50	5,5	14	62	60	46	G1/2	2	BL01
MC2-B-VNR	50	5,5	14	62	60	46	G1/2	2	BL02