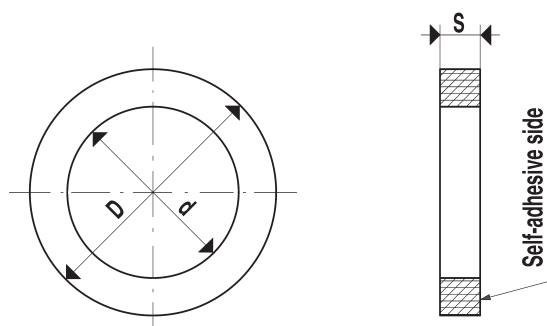
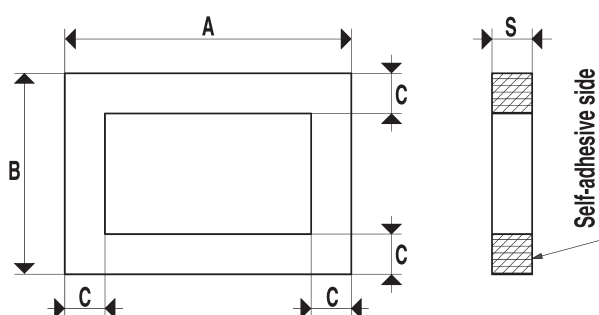




## [Foam rubber cups]



Art.	Force Kg.	D Ø	d Ø	S
01 42 15	0.78	40	20	15
01 64 15	3.5	64	40	15
01 92 15	8.5	92	64	15
01 127 15	17.5	127	92	15
01 180 15	38.5	180	140	15
01 220 15	63.6	220	180	15

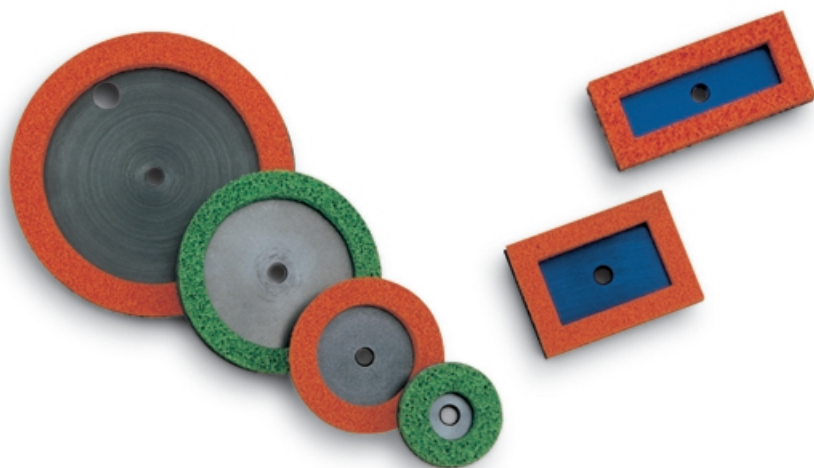


Art.	Force Kg.	A	B	C	S
01 107 75	9	107	75	15	15
01 135 50	6	135	50	15	15
01 135 60	8	135	60	15	15
01 290 68	25	290	68	15	15
01 290 140	72	290	140	15	15

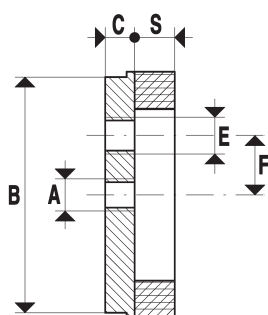
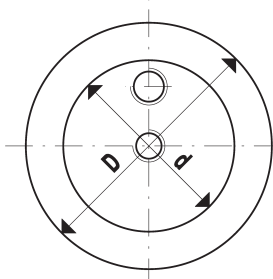
The cups shown on this page are made with a special foam rubber compound which has such a density that allows them to grip also on uneven and very rough surfaces and to maintain their elasticity also after many working cycles.

The cups of this series have a self-adhesive side in order to allow a quick fixing to their supports. Foam rubber cups have been designed for handling loads with crude or very rough surfaces (sawn, bushammered or flamed marbles, buckle plates, treadplates or plates with fret, striated plexiglas, raw cement manufactures, garden tiles with grit, etc.) and in all those cases where traditional cups cannot be used.

These cups are produced in circular and rectangular shapes; upon request they can be supplied in different sizes and shapes.



## [Foam rubber cups with support]

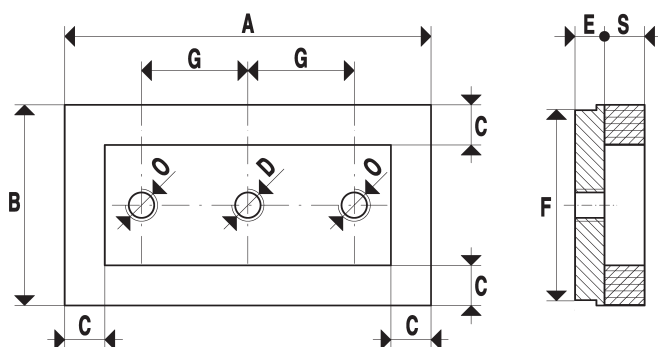


These cups are the same foam rubber cups as previously described, fixed on a proper support in anodized aluminium.

Supports have a central threaded hole to fasten them to the machine or to the cup holder and, upon request can be supplied with side threaded hole for the suction connection.

As a spare part it is sufficient to order only the cup in self-adhesive foam rubber corresponding to the support external sizes and with code 01 ... instead of 08 ...

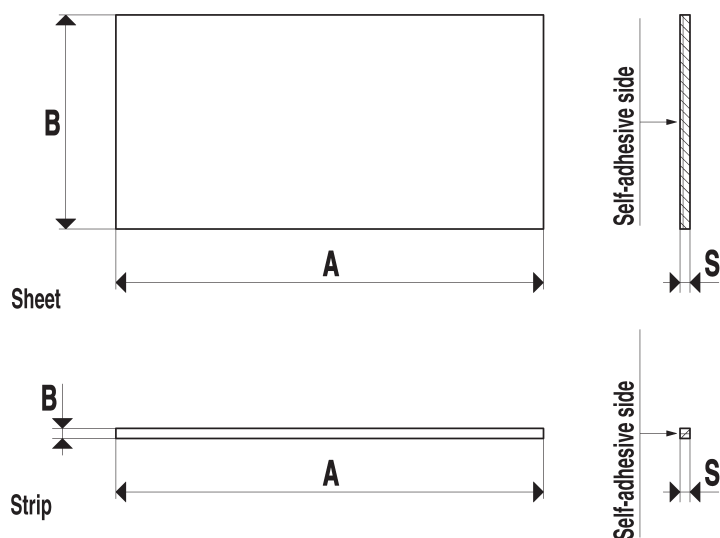
Art.	Force Kg.	A Ø	B Ø	C	D Ø	d Ø	E Ø	F	S
08 42 15	0.78	M12	40	10	40	20	--	--	15
08 64 15	3.5	M12	60	10	64	40	--	--	15
08 92 15	8.5	M12	88	11	92	64	--	--	15
08 127 15	17.5	M12	120	15	127	92	3/8"	30	15
08 180 15	38.5	M12	160	12	180	140	3/8"	60	15



Art.	Force Kg.	A	B	C	D Ø	E	F	G	O Ø	S
08 107 75	9	107	75	15	M12	11	70	--	--	15
08 135 50	6	135	50	15	M12	11	45	--	--	15
08 135 60	8	135	60	15	M12	11	55	--	--	15
08 290 68	25	290	68	15	3/8"	11	62	100	M12	15
08 290 140	72	290	140	15	1/2"	11	134	100	M12	15



## [Foam rubber sheets and strips]



The same kind of foam rubber used for making suction cups can be supplied in sheets or strips, with the sizes shown in the table.

In order to allow an easy and quick fixing to the metal support, both rubber sheets and strips have a self-adhesive side.

With foam rubber sheets and strips, it is possible to make cups in whatever shape required and move loads with raw or very rough surfaces.

Upon request they can be supplied in different sizes and densities.

Art.	A	B	S
Sheet	2000	1000	10
Sheet	2000	1000	15
SGS 10 10	2000	10	10
SGS 15 10	2000	15	10
SGS 20 10	2000	20	10
SGS 20 15	2000	20	15