

Pressure gauges Mod. M043.. - M053.. - M063..

Precision classes CL1,6 and CL2,5

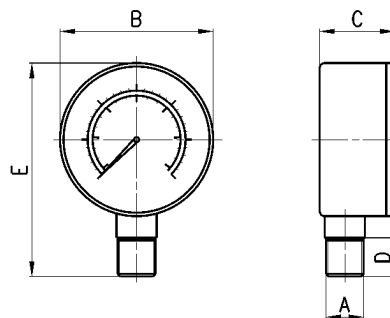


- » Radial connection
- » Rear connection
- » Panel mounting

To select the most suitable pressure gauge, the measurement range should be chosen considering the type of application according to the following criteria:

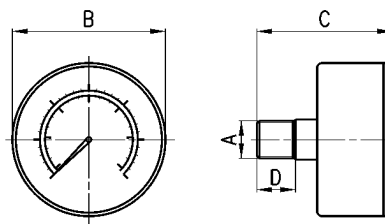
1. Constant pressure or pressure with slow fluctuations should be within 75% of the maximum scale value.
2. Pulsing pressure or rapid fluctuations should be within 65% of the maximum scale value.
3. Pressure peaks should never exceed the maximum scale value.

Pressure gauges with radial connection

 Precision class CL1,6 (mod. M063...)
 Precision class CL2,5 (mod. M043... and M053...)


DIMENSIONS						
Mod.	A	B	C	D	E	Range
M043-R06	R1/8	Ø 40,5	24,5	10	57	0-6 бар
M043-R12	R1/8	Ø 40,5	24,5	10	57	0-12 бар
M053-R12	R1/8	Ø 52,5	29	10	70	0-12 бар
M063-R12	R1/4	Ø 63	28	12	83	0-12 бар

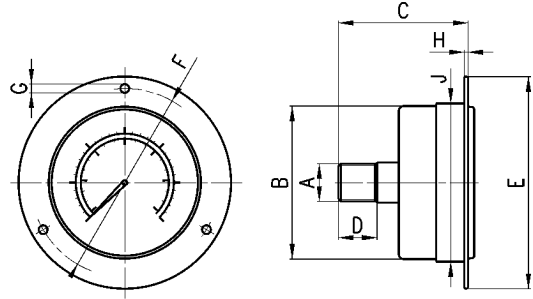
Pressure gauges with rear connection

 Precision class CL1,6 (mod. M063...)
 Precision class CL2,5 (mod. M043... and M053...)


DIMENSIONS					
Mod.	A	B	C	D	Range
M043-P04	R1/8	Ø 40	39,5	10	0-4 бар
M043-P06	R1/8	Ø 40	39,5	10	0-6 бар
M043-P10	R1/8	Ø 40	39,5	10	0-10 бар
M043-P12	R1/8	Ø 40	39,5	10	0-12 бар
M053-P04	R1/8	Ø 53	45	10	0-4 бар
M053-P06	R1/8	Ø 53	45	10	0-6 бар
M053-P10	R1/8	Ø 53	45	10	0-10 бар
M053-P12	R1/8	Ø 53	45	10	0-12 бар
M063-P04	R1/4	Ø 62,5	45,5	12	0-4 бар
M063-P06	R1/4	Ø 62,5	45,5	12	0-6 бар
M063-P12	R1/4	Ø 62,5	45,5	12	0-12 бар

Pressure gauges for panel mounting

Precision class CL1,6 (mod. M063...)
 Precision class CL2,5 (mod. M043... and M053...)



DIMENSIONS										
Mod.	A	B	C	D	E	F	G	H	J	Range
M043-F04	R1/8	Ø 41	38	10	Ø 60,5	53	Ø 3,5	1,2	42,5	0-4 bar
M043-F06	R1/8	Ø 41	38	10	Ø 60,5	53	Ø 3,5	1,2	42,5	0-6 bar
M043-F10	R1/8	Ø 41	38	10	Ø 60,5	53	Ø 3,5	1,2	42,5	0-10 bar
M043-F12	R1/8	Ø 41	38	10	Ø 60,5	53	Ø 3,5	1,2	42,5	0-12 bar
M063-F12	R1/4	Ø 62	43	12	Ø 84	74,5	Ø 3,5	1,2	63,5	0-12 bar

Series PG digital pressure gauges

New

Possibility of a direct mounting with rear or panel connection



- » Pressure unit on display
- » Battery powered
- » Easy and fast read out with digital display
- » 4 user programmable pressure units available
- » Power saving mode
- » Back light
- » Dust-proof and splash-proof (IP65 protection class)

The new Series PG digital pressure gauges meet the need of an even more precise pressure adjustment, above all in proportional control.

Thanks to the IP65 protection class these pressure gauges are particularly suitable for applications where the highest environmental protection is required.

TECHNICAL DATA

New

CHARACTERISTICS

	PG...-PB...	PG...-VB...
Pressure units (programmable by the user)	psi, bar, mmHg, kPa	psi, bar, kgf/cm ² , MPa
Rated pressure range	0 + 1 bar	0 + 10 bar
Display pressure range	0.1 + -1 bar	-0.1 + 10 bar
Withstand pressure	3 bar	15 bar
Repeatability	≤ ± 1% F.S. ± 1 digit	≤ ± 0,2% F.S. ± 1 digit
Indicator accuracy	≤ ± 2% F.S. ± 1 digit (ambient temperature: 25 ± 3°C)	
Medium	Filtered air, incombustible and non-corrosive gases	
Battery: Type	CR 2032 lithium	
Life	1 year (5 times/day)	
Low-power indicator	Yes	
Replacement	Yes	
Back light	Yes	
Turn-on interval	Display turns off after 60 seconds	
Sample rate	2 Hz (2 times/second)	
LCD display	3 ½ digit, 7 segment	
Environment: Protection class	IP65 (an air tube must be installed un tubo per l'aria to maintain this grade)	
Temperature	Operation: 0 + 50°C Storage: -10 + 60°C (no condensation or freezing)	
Relative humidity	Operation/storage: 35 + 85% RH (no condensation)	
Vibrations	Total amplitude 1.5mm or 10G 10Hz-55Hz-10Hz scan for 1 minute 2 hours for each direction of X, Y and Z	
Shock	100 m/s ² (10G) 3 times for each direction of X, Y and Z	
Changes due to temperature	≤ ± 2% F.S. of detected pressure (25°C) within the operating temperature range	
Pneumatic connections ports	G1/4 - M5 or G1/8 - M5	

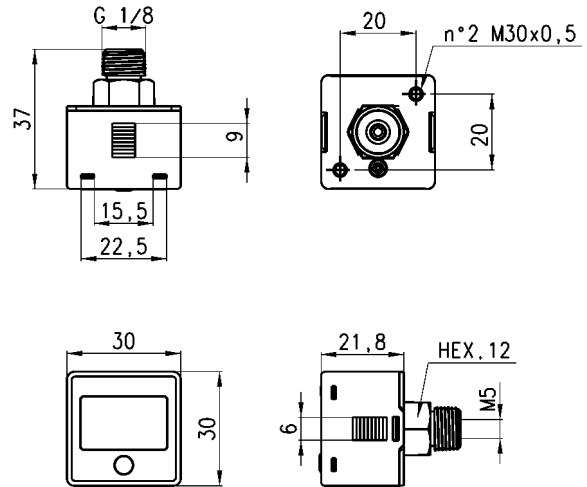
CODING EXAMPLE

PG	010	-	P	B	-	1/8
PG	SERIES					
010	BOTTOM SCALE: 010 = 10 bar 001 = -1 bar					
P	PRESSURE RANGE: P = pressure V = vacuum					
B	LIGHTING: B = back light					
1/8	PNEUMATIC CONNECTIONS: 1/8 = G 1/8 BSPP; M5 1/4 = G 1/4 BSPP; M5					

3

TREATMENT

Series PG digital pressure gauges

New


Mod.

PG010-PB-1/8
PG001-VB-1/8
PG010-PB-1/4
PG001-VB-1/4

